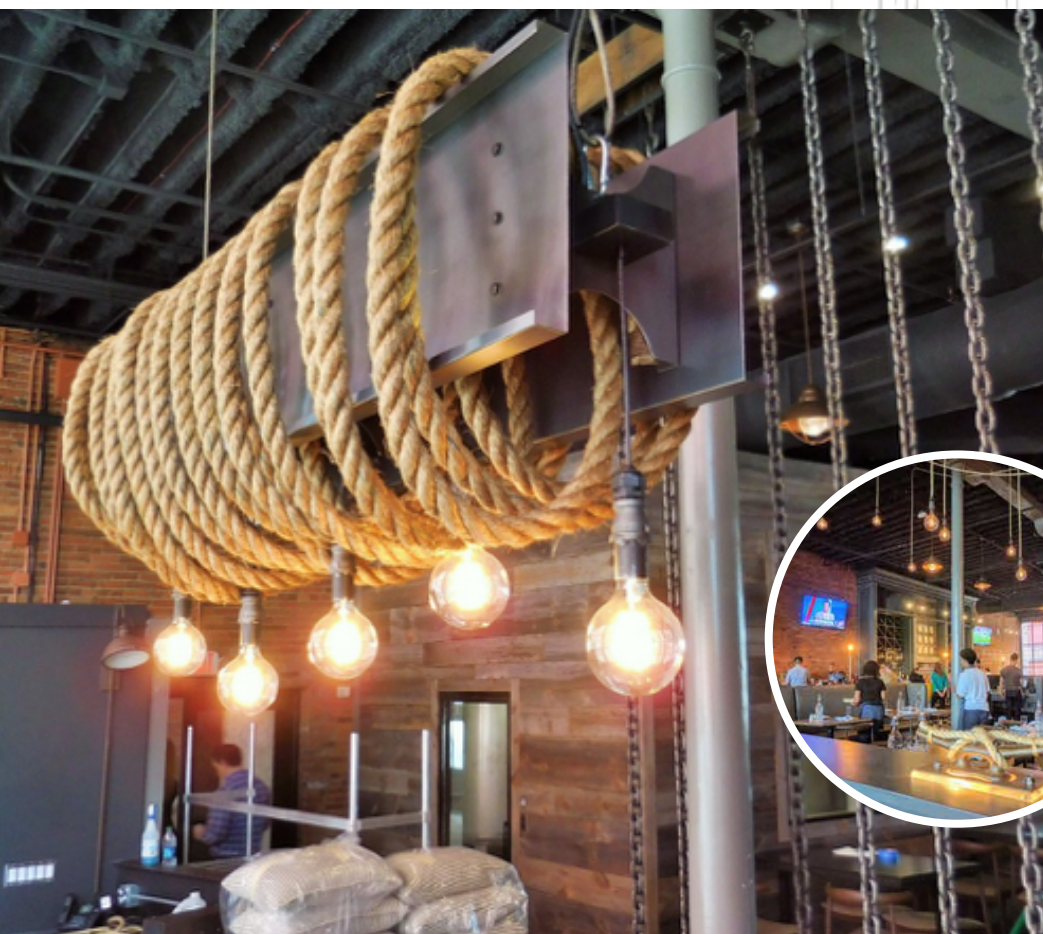


Halper Lighting Solutions

The Menu for Restaurant Lighting From Start to Finish



Step 1: Understand the Flavor

While all good lighting design must support the design team's vision, restaurant lighting holds a particular challenge: creating an ephemeral sense of the unique and exciting dining experience one is about to enjoy. Aesthetic concerns such as accent, sparkle and texture must be subjectively "felt" at the same instant that practical concerns of pathways and seating locations are unconsciously communicated. On this port-city themed project, Halper Lighting Solutions (HLS) was asked to design fixtures that would bind rope to sail, lock brass to chain, and lash dock to deck.

These concepts undergird the designer's vision of a crossroads of sea and land. As lighting elements were blended with the overall interior design, HLS never lost sight of the very real need to maintain proper lighting design principles.

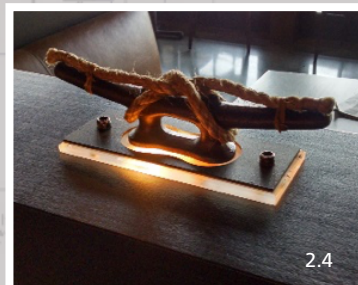
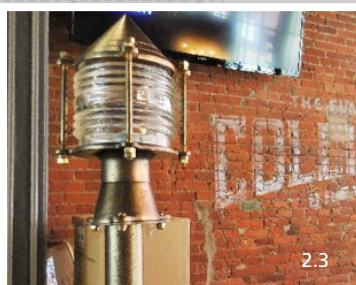
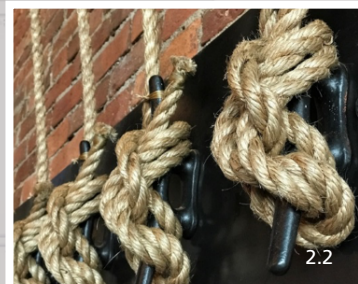


Step 2: Choose the Right Ingredients

With the theme established, the following lighting elements were blended into the space: Heavy lashing ropes swag and tie to oversized wall cleats (2.1 & 2.2), authentic Norwegian trolling lights line the bar (2.3), and illuminated dock cleats (2.4) provide passage cues along the booths.

Anchoring the collection is a large custom "girder", wrapped with over 100 feet of 1-1/2" diameter sisal roping, illuminated with internal grazing light and LED down lights (Background & Top Photo).

Clustered and scattered throughout the restaurant, this custom lighting package offers an enticing "aroma" of the unique dining experience a guest will enjoy.



Step 3: Blend Well and Add Secret Sauce



Always willing to go the extra mile, HLS was asked to become an integral partner in coordinating finishes throughout the restaurant, developing textures and colors that would become ubiquitous. Wherever possible, architectural and decorative materials were brought into HLS' hand-painting department (3.1) and finished there to coordinate with lighting fixture parts.

On site, handrails, shelving details and additional booth components hardware became a part of HLS' scope, the resulting continuity emphasizing a consistent "patina" that permeates every detail (3.2).



Step 4: Serve with Flair - Hot and Fresh



Having become an integral part of the installation team, Halper Lighting Solutions continued to rise to the challenge. Now familiar with the well-worn building's structural oddities, HLS assisted in the development and installation of custom sails used to separate seating areas, set off by grazing track spot lights (4.1).



Finally, custom menu holders were designed and constructed (4.2), mingling with the overall décor.

Step 5: Enjoy!

From early concepts and schematic designs to opening night, Halper Lighting Solutions remained committed to the design vision for this vibrant and thriving eatery. The restaurant's continued success is a testament to the team's thoughtful planning, professional collaboration and detailed execution.

Bon appetit!

The Mission of Halper Lighting Solutions

To reveal the true nature of our clients' visions through thoughtful lighting design, fostering better projects and stronger communities.